

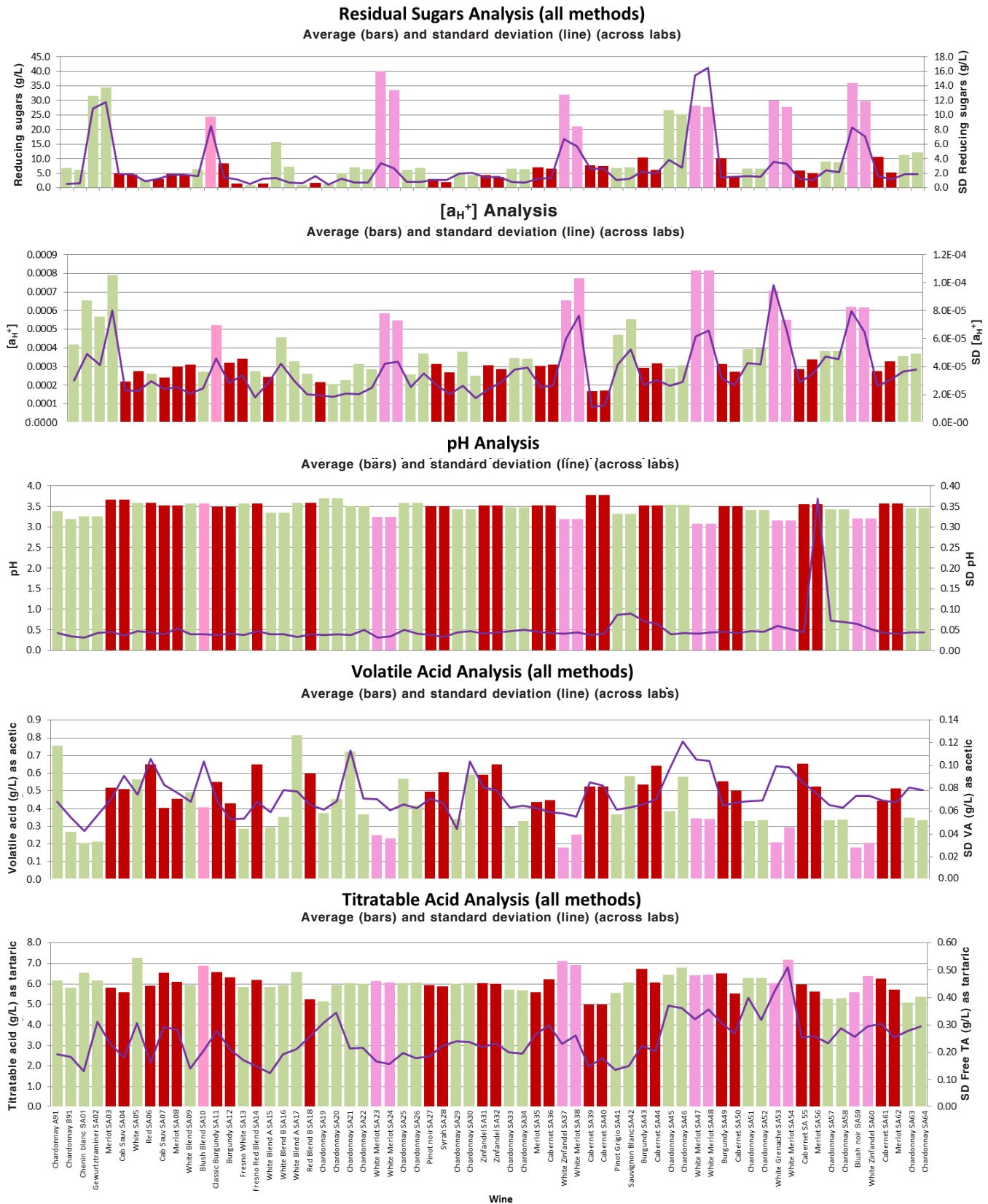
Supplemental Data for:

Howe, P.A., S.E. Ebeler, and G.L. Sacks. 2015.

Review of thirteen years of CTS winery laboratory collaborative data.

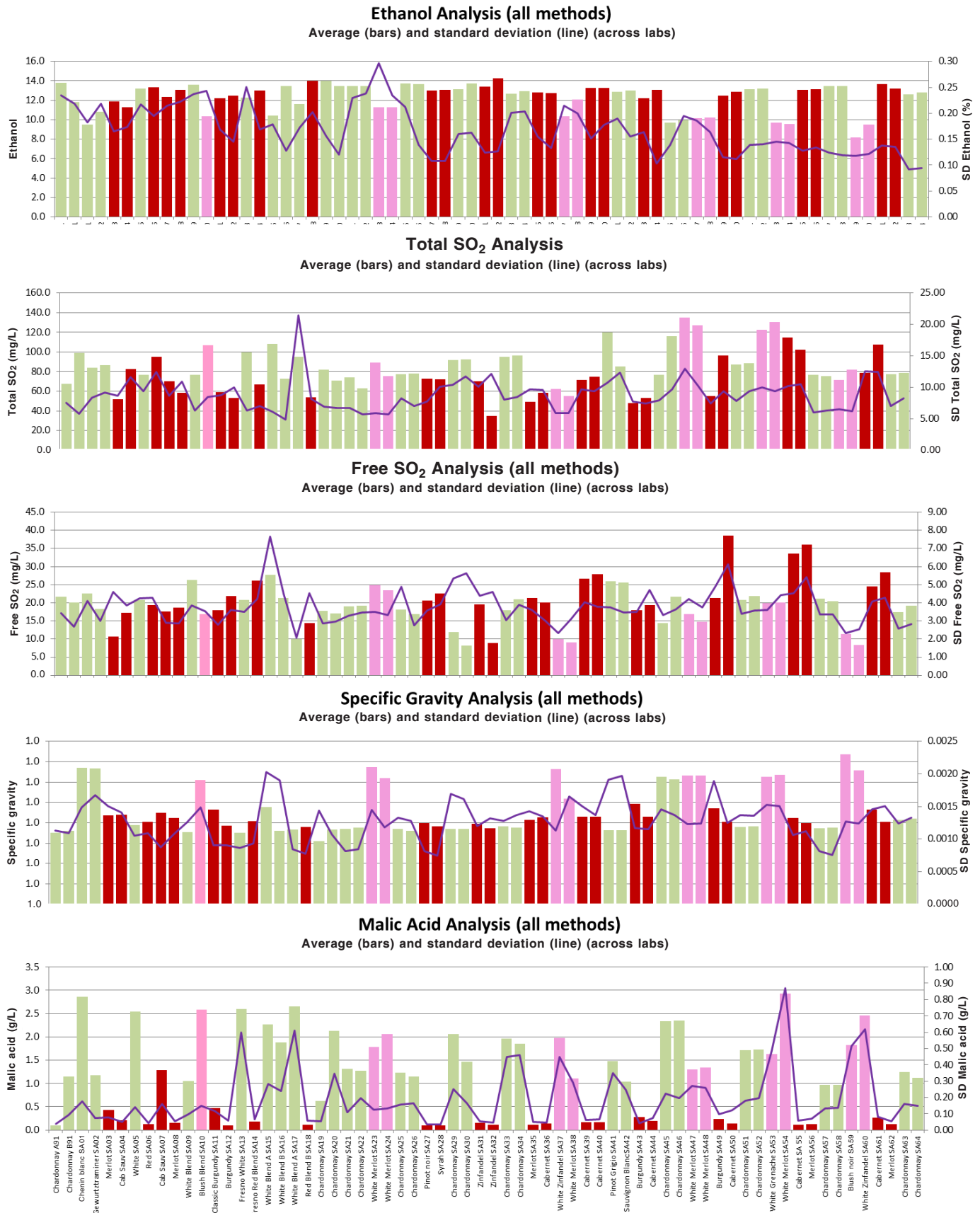
Am. J. Enol. Vitic. 66:321-339. doi: 10.5344/ajev.2015.14119.

Supplementary Material Mean, standard deviation (SD), and relative standard deviation (RSD) for multiple analytes over the course of the study, demonstrating variability and apparent wine matrix effects. Green: white wines; Pink: blush wines; Red: red wines.



Supplemental Data for:

Howe, P.A., S.E. Ebeler, and G.L. Sacks. 2015.
 Review of thirteen years of CTS winery laboratory collaborative data.
 Am. J. Enol. Vitic. 66:321-339. doi: 10.5344/ajev.2015.14119.

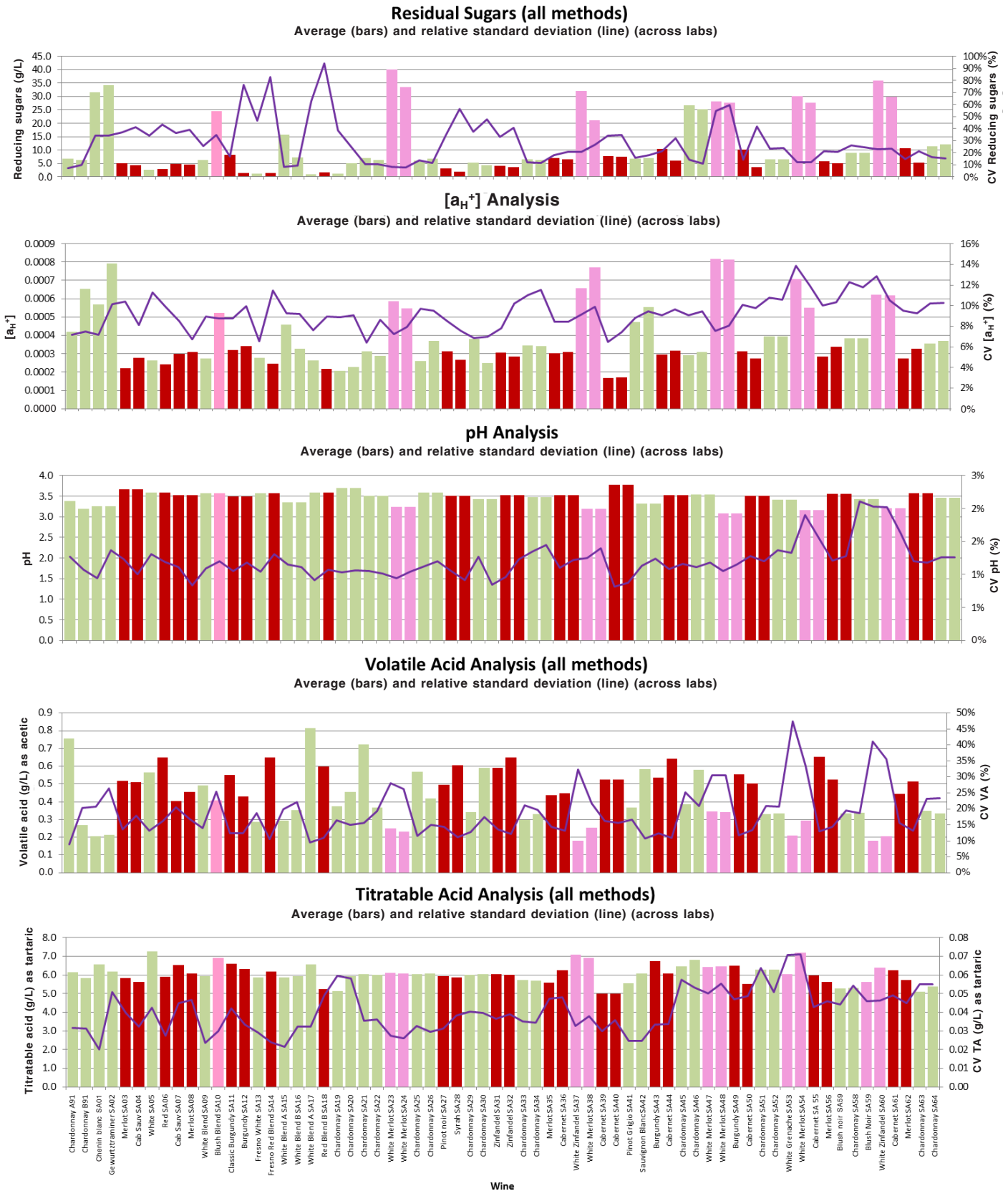


Supplemental Data for:

Howe, P.A., S.E. Ebeler, and G.L. Sacks. 2015.

Review of thirteen years of CTS winery laboratory collaborative data.

Am. J. Enol. Vitic. 66:321-339. doi: 10.5344/ajev.2015.14119.



Supplemental Data for:

Howe, P.A., S.E. Ebeler, and G.L. Sacks. 2015.
 Review of thirteen years of CTS winery laboratory collaborative data.
 Am. J. Enol. Vitic. 66:321-339. doi: 10.5344/ajev.2015.14119.

