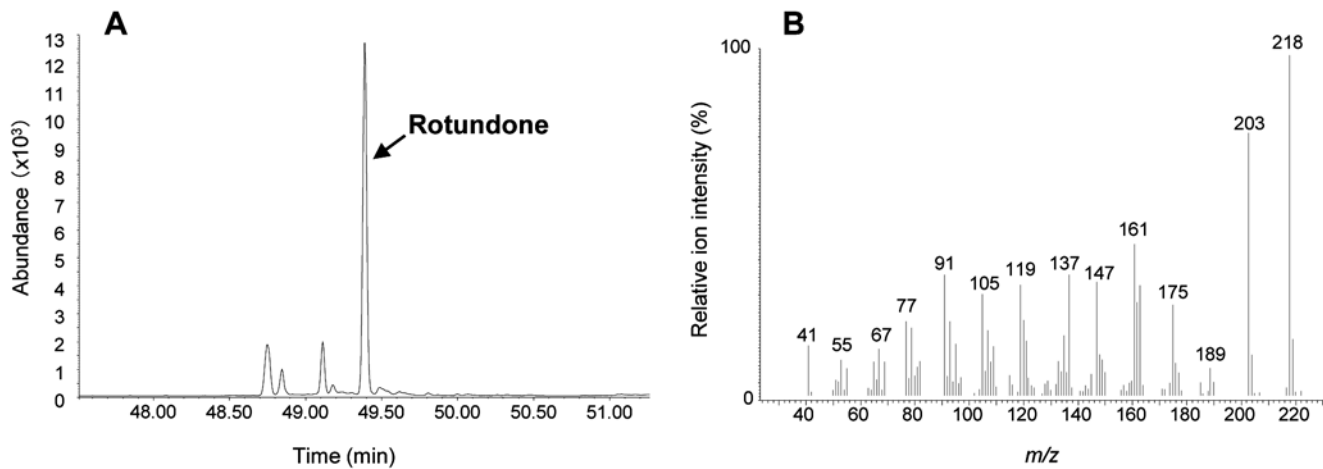


Supplemental Data for:

Takase, H., K. Sasaki, H. Shinmori, A. Shinohara, C. Mochizuki, H. Kobayashi, H. Saito, H. Matsuo, S. Suzuki, and R. Takata. 2015. Analysis of rotundone in Japanese Syrah grapes and wines using stir bar sorptive extraction (SBSE) with heart-cutting two-dimensional GC-MS. *Am. J. Enol. Vitic.* 66:398-402. doi: 10.5344/ajev.2015.14118.



Supplemental Figure 1 Two-dimensional chromatogram of rotundone. Six hundred ng/L of rotundone was spiked in Cabernet Sauvignon wine. (A) SIM mode (m/z 218). (B) The mass spectrum of rotundone obtained in scan mode at the retention time of 49.39 min.