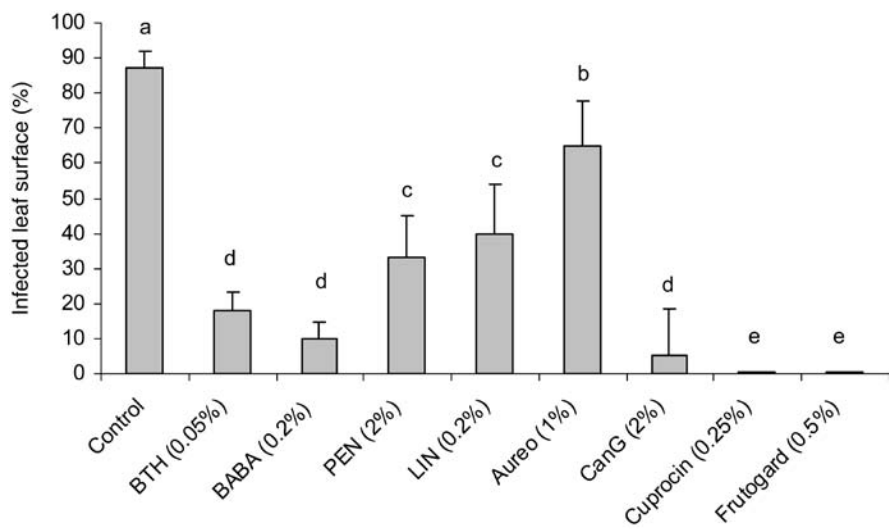
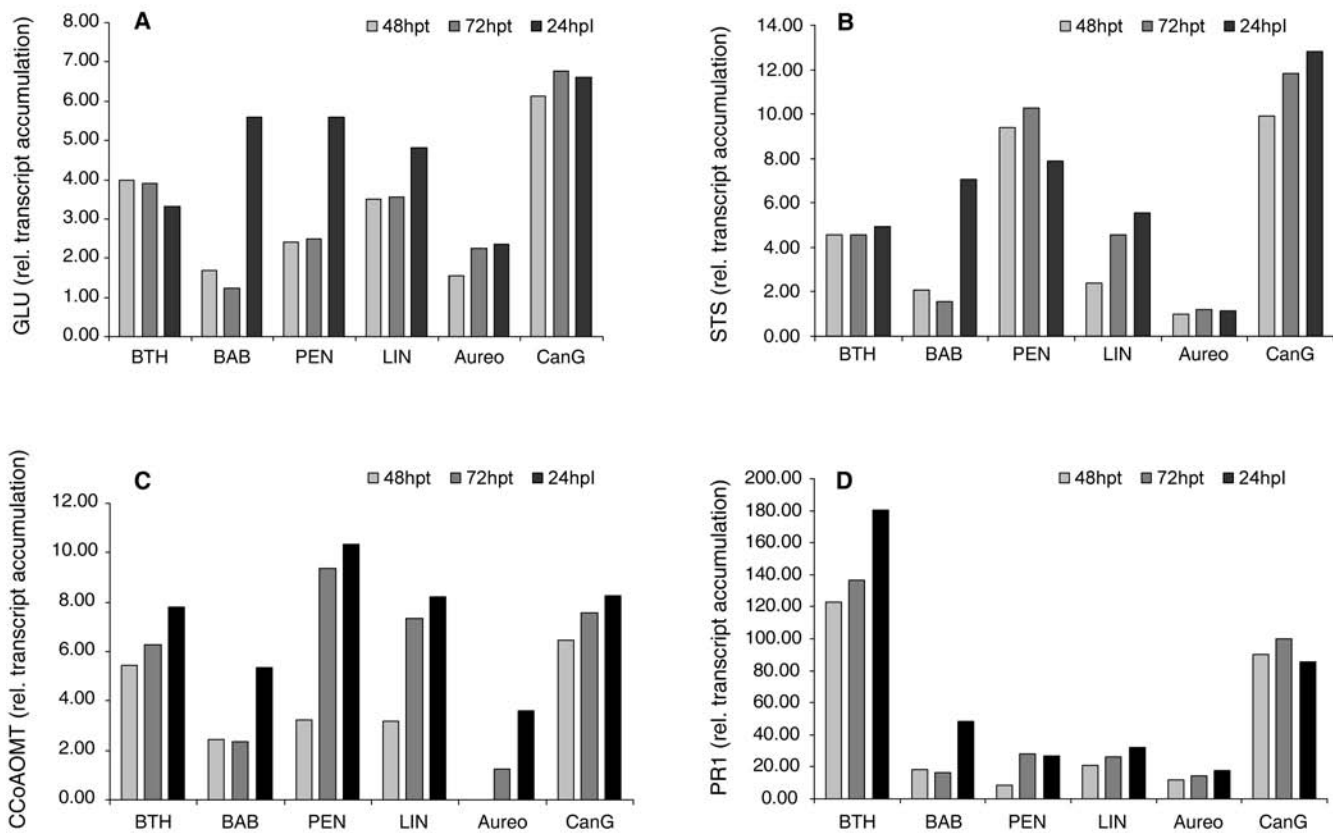


Supplemental Data for:

Harm, A., H.H. Kassemeyer, T. Seibicke, and F. Regner. 2011.  
Evaluation of chemical and natural resistance inducers against downy mildew (*Plasmopara viticola*) in grapevine.  
Am. J. Enol. Vitic. 62:184-192. doi:10.5344/ajev.2011.09054.



**Supplemental Figure 1** Downy mildew infected leaf surface of potted vines under greenhouse conditions. Grapevine plants (~4-month-old) with 8 to 10 leaves were treated with the resistance inducers and inoculated 4 days later with a suspension of *P. viticola* (20,000 sporangia/mL). Means and standard deviations of three experiments, each with four replications. Means for each resistance inducer followed by the same letter are not significantly different following Tukey test ( $\alpha = 0.05$ ).



**Supplemental Figure 2** Relative transcript accumulation of defense genes in elicitor-treated leaf discs 48 hr posttreatment (hpt) and 72 hpt: (A)  $\beta$ -1,3-glucanase; (B) stilbene synthase; (C) caffeoyl-coenzyme A 3-O-methyltransferase; (D) PR-1. For testing priming effects, leaf discs were inoculated 48 hpt and sampled 24 hr after inoculation. For calculation, water-treated leaf discs were used as reference samples.