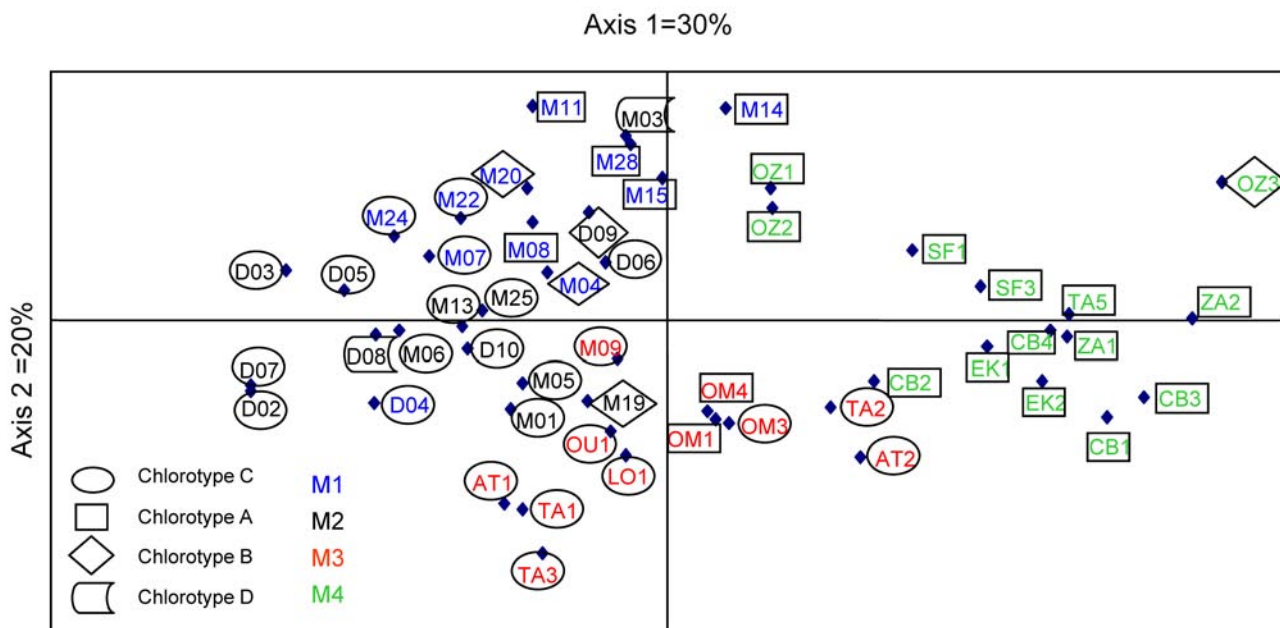


Supplemental Table 1 Location of wild accessions analyzed in this study.

Code	Location	Latitude (°N)	Longitude (°W)	Height (m)	Observations
ZA	Zaouia Ahansal	32.0589	6.0987	1235	Isolated population
CB	Chabet-el-Btom	33.1625	6.8929	660	Isolated population
OU	Ouaoumana	32.6983	5.8425	715	Farmed land
OM	Oum-er-Rbia	33.0565	5.4160	1250	Inhabited area
EK	El-Ksiba	32.5821	6.0510	750	Inhabited area
LO	L'Ourika	31.3687	7.7927	900	Farmed land
SF	Setti-Fatma	31.2278	7.6724	1430	Inhabited area
AT	Arba-Talatast	31.4153	7.5334	1080	Farmed land
TA	Taddert	31.3744	7.4108	1275	Farmed land
OZ	Ouzoud	32.0000	6.0600	1495	Isolated population



Supplemental Figure 1 Principal component analysis visualizing genetic relationships among grapevine accessions. The first two components are plotted, explaining 30% (horizontal axis) and 20% (vertical axis) of the total variation, respectively.