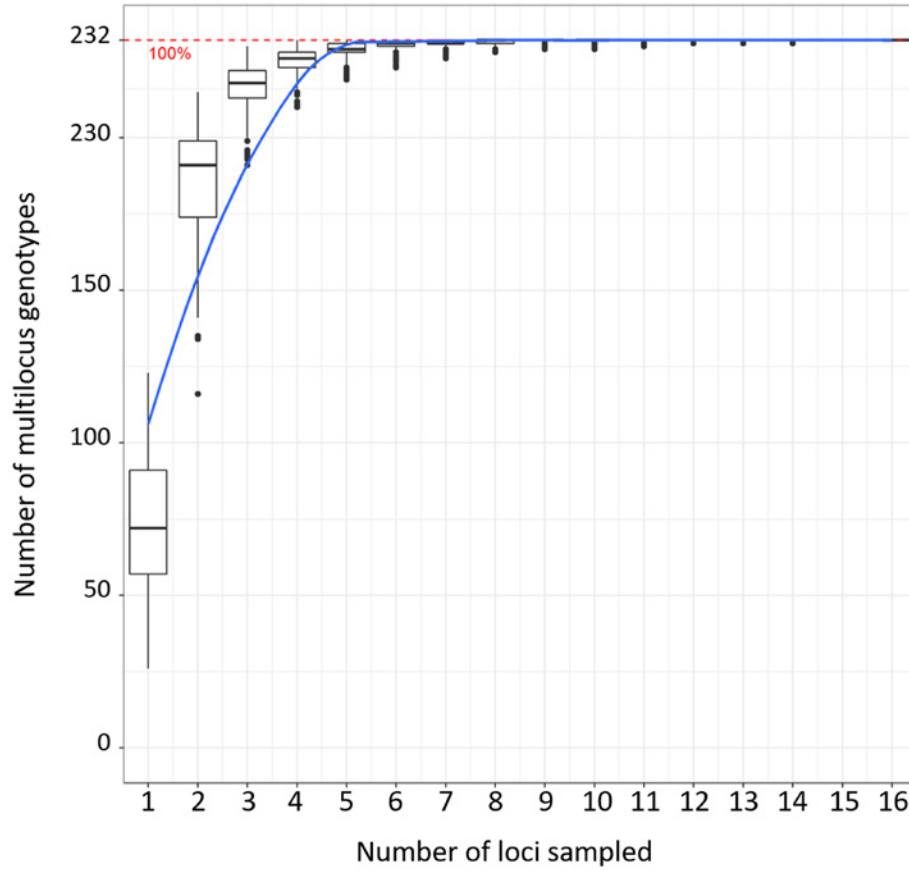


Supplemental Data for:

Migliaro D, De Lorenzis G, Di Lorenzo GS, De Nardi B, Gardiman M, Failla O, Brancadoro L and Crespan M. 2019. Grapevine non-*vinifera* genetic diversity assessed by simple sequence repeat markers as a starting point for new rootstock breeding programs. *Am J Enol Vitic* 70:390-397. doi: 10.5344/ajev.2019.18054.



Supplemental Figure 1 Genotype accumulation curve of 232 grapevine rootstock accessions, genotyped over 16 SSR loci. The red dashed line represents 100% of the total observed genotypes. Blue: trend line.