

Research Article

Evaluation of Sample Preparation Practices Common with Differential Thermal Analysis of Grapevine Bud Cold Hardiness

Jason P. Londo,^{1*} Michelle M. Moyer^{2*} Maria Mireles,² Lynn Mills,² Markus Keller,² Beth Ann Workmaster,³ Amaya Atucha,³ and Al P. Kovaleski³

Author Affiliations: ¹School of Integrated Plant Science, Horticulture section, Cornell University, 630 West North Street, Geneva, NY 14456; ²Department of Horticulture, Washington State University – Irrigated Agriculture Research and Extension Center, 24106 North Bunn Road, Prosser, WA 99350; ³Department of Horticulture, University of Wisconsin-Madison, 1575 Linden Drive, Madison, WI 53705.

*Corresponding Authors (jpl275@cornell.edu; michelle.moyer@wsu.edu)

Acknowledgments: Financial support provided by the Washington State Grape and Wine Research Program where funding sources include Washington State Wine Commission, Auction of Washington Wines, State Liter tax, and/or WSU Agriculture Research Center; USDA National Institute of Food and Agriculture Hatch project 1016563. This work was partially supported by U.S. Department of Agriculture appropriated project 1910-21220-006-00D. We would like to acknowledge the collection and preparation support provided by Hanna Martens and Lex Pike.

Manuscript submitted Feb 8, 2022, revised June 20, 2022, June 30, 2022, and July 11, 2022, accepted July 15, 2022

This is an open access article distributed under the CC BY license (<https://creativecommons.org/licenses/by/4.0/>).

By downloading and/or receiving this article, you agree to the Disclaimer of Warranties and Liability. The full statement of the Disclaimers is available at <http://www.ajevonline.org/content/proprietary-rights-notice-ajev-online>. If you do not agree to the Disclaimers, do not download and/or accept this article.

Abstract: Differential thermal analysis (DTA) is a popular semi-automated method for determining the temperature at which plant tissues freeze. It is used to evaluate effects of environmental variables, genotypes, and various agronomic practices on cold hardiness, as well as an Extension tool for cold hardiness monitoring and decision support for growers of many specialty crops. The study presented here evaluated common approaches in sampling and preparation of dormant grapevine compound buds for DTA, to provide a reference point as to which adjustments might be cause for excessive variation in subsequent data. We found that common adjustments in sample preparation, whether using foil packets,

moistened tissue paper, or bud orientation, resulted in little consistent consequence in observed DTA values, typically resulting in a variation of less than 1°C. The same was true for storage (or shipping conditions) of 24 h or less, provided samples were maintained at low, but above-freezing temperatures (1.6 to 4°C). Finally, influence of bud position along the length of the cane was also not found to be consistent. Taken together, these findings demonstrate that the robust nature of DTA for estimating grapevine cold hardiness offsets the potential impact of variation introduced from different sample preparation methods. These results can be used to help those wishing to develop DTA protocols, or expand their capacity to conduct DTA analysis, to better design their laboratory protocols to best suit their individual program needs. Consistency in DTA approach is likely more important than the specific methods used, especially when comparing relative differences in observed lethal temperatures.

Key words: Cold hardiness, controlled freezing, endodormancy, low temperature exotherm, protocol evaluation, *Vitis*

Introduction

Low-temperature injury to dormant grapevines (*Vitis* sp.) is a common occurrence in cool and continental climate viticulture regions (Clark 1936, Clore et al. 1974, Fennell 2004, Zabadal et al. 2007, Davenport et al. 2008, Dami et al. 2012, Londo and Martinson 2015). This injury occurs in multiple forms – from phloem damage that is repairable (Esau 1948), to damage to overwintering compound buds, which triggers management responses to mitigate crop loss, to permanent damage to the xylem and vine death, which results in vine retraining or vineyard replanting (Wolfe 2001). Given the potential economic impact cold damage has on commercial grape production, there have been concerted efforts over the years looking at methods to estimate cold hardiness and to understand acclimation and deacclimation processes in grapevine (e.g., Pellett 1971, Clore et al. 1974, Stergios and Howell 1977, Wolf and Pool 1987, Wolf and Cook 1994, Ferguson et al. 2014, Dami et al. 2016, North et al. 2021).

Central to these efforts has been the advancement of cold hardiness monitoring techniques and technologies, from visually assessing damage after naturally occurring cold events (Clark 1936, Zabadal et al. 2007, Davenport et al. 2008, Moyer et al. 2011, Dami et al. 2012), to controlled freezing of tissue and visual damage assessment (Clare et al. 1974), to a semi-automated procedure with controlled freezing and measurement of the temperature at which intra- and intercellular water freezes (Wample et al. 1990, Wolf and Cook, 1994, Mills et al. 2006). The advancement of cold hardiness evaluation approaches has also seen an increase in the number of studies using these tools to evaluate the influence of genetic, environmental, or horticultural factors on cold hardiness of grapevines (Wample et al. 1993, Wolpert and Howell 1984, Davenport et al. 2008, Zhang and Dami 2012, Ferguson et al. 2014, Londo and Martinson 2015, Shellie et al. 2015, Buztepe et al. 2017, Londo and Kovaleski 2017, Yilmaz et al. 2021), and many other specialty crops: fruit crops such as peach (*Prunus persica*; Liu et al. 2019), sweet cherry (*Prunus avium*; Kose and Kaya, 2022), apricot (*P. armeniaca*; Kovaleski, 2022), blackberries and raspberries (*Rubus* spp.; Warmund and George, 1990); ornamental crops such as Eastern redbud (*Cercis canadensis*), flame azalea (*Rhododendron calendulaceum*), and forsythia (*Forsythia* spp.) (Kovaleski, 2022); and forest species such as balsam fir (*Abies balsamea*), red maple (*Acer rubrum*), and sugar maple (*A. saccharum*) (Neuner et al. 2019, Kovaleski 2022).

With the increase in interest in evaluating cold hardiness, there has also been an increase in the number of methods for sample collection and processing for the purpose of cold hardiness evaluation. Many of these alternative approaches have been devised to overcome some regional or resource limitation that would otherwise prevent the intended study. Whether or not it is necessary, this has also led to scrutiny over protocol approaches with the concern that different approaches are likely to introduce error in the accuracy of results obtained by differential thermal analysis (DTA). All evaluations of DTA are estimates of freezing resistance and cold hardiness. The principle of DTA is the direct measurement of the low temperature exotherm (LTE), which is a measure of intracellular ice formation when the mechanism

of supercooling fails (Graham and Mullin 1976). Measuring LTE is a favored method for rapid assessment of bud cold hardiness relative to the laborious task of visual assessments of internal bud oxidative browning following low temperature events (Andrews et al. 1984, Wolf and Pool 1987, Wample 1990, Wolf and Cook 1994, Mills et al. 2006, Dami et al. 2016, Londo and Kovaleski 2017, North et al. 2021). However, estimating bud cold hardiness from a collection of dormant buds using DTA is simply that – an estimate. While the absolute cold hardiness may never be known; knowing what an LTE value is relative to a treatment of interest (i.e., result of a viticulture practice, time in season, or another variety) can provide both useful scientific evidence for understanding a physiological process, or a practical guide for developing cold-response strategies. Most studies involving the evaluation of cold hardiness focus on the comparison of treatments or contrasts between varieties, rather than the discovery of the absolute value of cold hardiness. DTA is frequently presented as a mean of a subsample of a population (Mills et al. 2006, Londo and Kovaleski 2017) demonstrating the value of precision. However, it should be noted that some studies have preferred to use the median (e.g., Wolf and Pool 1987, Dami et al. 2016). Additionally, all current methods of cold hardiness evaluation require removal of tissue samples from the field, precluding any possibility of measuring true, field cold hardiness. Thus, we suggest that best practices associated with DTA in grapevine, and perhaps other perennial cropping systems, should be focused on what reduces the amount of error observed in that system (precision), rather than designed to achieve the “absolute” value (accuracy), which may never be determined.

A common criticism that is stated for studies conducting DTA relates to the temperature at the time of sample collection and the time taken during processing (Kaya and Kose 2020). The concept is that if sample collection and preparation is not done rapidly, and samples are not maintained at the same temperature as that experienced during collection, then rapid deacclimation would occur which would shift observed cold hardiness values. Effects of preconditioning canes with subfreezing temperatures demonstrates it is possible to shift LTE measurements to lower values (Quamme 1986) and Kovacs et al.

(2002) demonstrated that dehydration of collected canes can also alter LTE measurements, shifting them lower as dehydration increases over time. While some studies have looked at the potential for collection temperature to have a meaningful impact on DTA analysis, most focused on storage conditions that are well-above typical storage and transport temperatures (i.e., 20°C versus 0 or 4°C), and extrapolate those findings to apply to all pre-processing storage conditions (e.g., Kaya and Kose 2020). Understanding the true impact of these factors on the accuracy and precision of DTA could improve the efficiency of sample collection and might also facilitate the development of DTA “centers” that can process out-of-area samples. Furthermore, if these factors were found to be of minor importance for DTA accuracy, this would permit direct comparison of data collected in different laboratories.

Selection of the nodes included in DTA analysis by various research groups varies, presumably in part due to differences in pruning styles, location, and training systems (Howell and Schaulis 1980, Walpert and Howell 1984, Wolf and Pool 1987, Dami et al. 2016, Wang et al. 2020, North et al. 2021). However, it is common practice for the collection of dormant canes in the field to typically target buds at position 3 through position 12 from the cane base. However, restricting DTA analysis to buds at these positions limits the capacity for evaluating varieties in small plot trials, mapping populations (Wang et al. 2020), and germplasm repositories (Londo and Kovaleski 2017), resulting in less sample points being examined and thus reducing replication.

The objectives of this study were to: 1) Evaluate several sample preparation procedures that are commonly described in DTA protocols evaluating cold hardiness of *Vitis* compound (overwintering buds; 2) Assess how storage or shipping of buds might impact cold hardiness assessments; and 3) Understand how bud position may or may not impact observed cold hardiness. The study emphasis was to determine the sources of error common in cold hardiness assessments and to place that error into the appropriate biological context for research and extension outcomes. These results could assist those conducting this type of research to best evaluate their own procedures and error tolerance. It may also

remove unnecessary research and review barriers that might prevent groups from collaborating on, or publishing information, that is regionally to globally relevant for the evaluation of bud cold hardiness. This includes limitations on equipment style and availability (which may require differences in sample preparation or storage), as well as limitations on the types of buds that can be collected for evaluation when considering different pruning strategies (cane vs. spur) that are common in cold-winter production systems.

Materials and Methods

Basic approach and equipment used in differential thermal analysis of grapevine organs. In all experiments, the overwintering, compound buds of various grape (*Vitis* spp.) varieties were examined with DTA. Buds were sampled at various times (November through March) over the dormant period in the northern United States as described in specific experiments below. Buds were excised from canes within 30 minutes of collection from the field (unless specified differently for individual experiments) by removing bud and as much of the bud cushion as possible such as to not negatively impact cold hardiness (as described in Pratt and Pool 1981, and Quamme 1986). Removing buds from the cane tissue, preparing the samples in the sample wells and engaging the freezer program was typically completed within 45 min. In Wisconsin, bud excision and preparation can exceed the 45 min mentioned above due to the original design of the DTA system. However, at this location, cane and bud tissues are kept cool with water ice coolers during setup. The Wisconsin location only participated in Experiment 2. Buds were then prepared for DTA as described for each experiment below.

The general DTA approach used by all laboratories participating in this study followed the method reported by Mills et al. (2006), with modifications as described for individual experiments. Generally, five to nine buds are placed on a thermoelectric module (TEM), nestled inside each sample well, and a LTE is recorded for each individual primary bud. The freezing program reduced the chamber temperature from +4°C to -40°C at a rate of -4°C/hr. Multiple programmable freezing units were used in the course of

this study. High temperature exotherms (HTEs) were noted and values for LTEs extracted from the DTA data were visually interpreted by experienced users based on the data plotting software used at each location (Washington, Wisconsin, New York). In all cases, LTE peaks are recorded as changes in voltage across a TEM plate with temporal reference to temperature recorded by a thermocouple.

In New York, four different programmable freezing units were used. Sample plates and dataloggers are as described in Mills et al. (2006). Three of the systems utilize Tenney T2C environmental chamber, the fourth system uses a BTC Tenney freezer (Tenney Environmental, New Columbia, PA). Each freezer setup has capacity for 4 sample trays, each holding 9 sample wells and a dedicated well for temperature tracking. All units employ a removable internal air deflector to improve air distribution and temperature evenness around the sample plates. All freezer units are housed in a single laboratory space on the AgriTech campus of Cornell University, Geneva, NY. Data were recorded from each freezer unit connected to either a Keithley 2700 or 2701 multimeter data acquisition system (Keithley Instruments, Cleveland, OH) linked with a dedicated computer running the BudFreezer program (Brock University Technical Services, Electronics Shops, Guelph, Canada). Visual identification of exotherm peaks was conducted by an experienced user, using the BudProcessor and BudLTE programs (Brock University Technical Services, Electronics Shops, Guelph, Canada).

In Washington, two different programmable Tenney T2C units were used, and both were designed as described by Mills et al. (2006), with the exception that the WA-1 unit had sample trays permanently wired to the data logger, whereas the WA-2 unit had detachable sample trays that connected to the data logger via a 25 pin D-sub connector. Each freezer setup has capacity for 4 sample trays, each holding 9 sample wells and a dedicated well for temperature tracking. Both units had internal air deflectors to improve air distribution and temperature evenness. Units were housed in separate facilities at the Washington State University Irrigated Agriculture Research and Extension Center in Prosser, WA. Identification of exotherm peaks occurred visually, by an experienced user.

In Wisconsin, a single programmable Tenney T2C freezing unit was used and DTA was performed using a modified combined methodology of Mills et al. (2006) and Einhorn et al. (2011). Ten TEM sample wells (models HP-127-1.4-1.5-74 and SP-254-1.0-1.3, TE Technology, Traverse City, MI), housed in individual hinged tin-plated steel containers, were evenly spaced and attached to each of four 30 x 30 cm perforated aluminum sheet pieces (“trays”; 40 TEMs total). The TEMs of each tray were wired to a single 24-pin D-sub connector. One copper-constantan (Type T) thermocouple (22 AWG) was positioned on each tray to monitor temperature in proximity to the TEM units. Trays were positioned vertically in the freezing unit, and TEMs and thermocouples were connected to a Keithley 2700 multimeter data acquisition system (Keithley Instruments, Cleveland, OH). TEM voltage and thermocouple temperature readings were collected at 15-second intervals via a Keithley add-in in Excel (Microsoft Corp., Redmond, WA). Freezing chamber fan turbulence was mitigated by covering individual trays with 1.27 cm thick open-cell foam sheets, as well as the use of a removable piece of perforated corrugated cardboard across the top of the chamber’s interior to function as a diffuser. Identification of exotherm peaks occurred visually by an experienced user.

Experiment 1 - Evaluation of sample preparation techniques. To evaluate the influence of different sample preparation methods, we designed a series of different experimental treatments (Table 1). Several different methods for preparing plant material for DTA are currently employed by research groups including: 1) placing buds in sample trays with or without moistened tissue paper, 2) with or without aluminum foil packets, and 3) with either the cut surface of the bud (inclusive of a small section of underlying cane / bud cushion) placed facing up (away from the TEM) or down (against the TEM). In all cases, LTE peaks were registered, indicating detection of the freezing event is not prevented by any one treatment. However, the variation between the temperature at which an LTE occurred from a pooled sample of buds and the derived mean of temperature at which an individual LTE occurs may differ.

The rationales for and against these various preparation techniques are as follows:

1) **Addition of surface moisture:** A small piece of paper tissue, moistened with distilled or deionized water, is placed in each sample well. Moistened tissue in the sample wells is thought to reduce the potential for bud dehydration (which presumably would lead to smaller LTEs that are more difficult to detect) and encourage ice nucleation, contributing to lower variation between bud samples (Wolf and Pool 1987). The argument against this method is that moistening may change the water content of the sample, and raise the temperature at which an LTE occurs, which would imply that a bud is judged less cold hardy than it would be in the field (Mills et al. 2006).

2) **Enclosing buds in aluminum foil:** Foil packets are assembled, and buds placed within the packets prior to placement in sample wells. Enclosing buds in foil packets is thought to prevent dehydration during the slow freeze ramp, reducing erroneous reduction in temperature of LTEs (indicating samples are more cold hardy), as well as increase thermal conduction to the TEM surface (Gale and Moyer 2017). The argument against this method is that foil preparation increases sample preparation time, reducing laboratory throughput and if preparation occurs at room temperature, then deacclimation may occur and higher LTE values (less cold hardy) will be observed.

3) **Bud orientation relative to sensor (TEM) plate:** Some laboratories position buds with the cut side of the bud (bud cushion) away from the TEM in the sample well; others place the cut side against the TEM. The idea is that reducing the distance between the sensitive bud primordia and the TEM (i.e., the cut side of the bud facing away) should result in more accurate recording of LTE, as the heat transfer distance is minimized. Placing the cut side down is often coupled with the use of moistened tissue to reduce dehydration from the cut bud cushion surface.

In Experiment 1, we evaluated different combinations of sample preparation, as listed in the sample preparation methods (**Table 1, Figure 1**). The experiments used both *Vitis vinifera* and *Vitis* hybrid varieties, collected on multiple dates across the winter season, and across three years (**Table 2**). Multiple

collection dates, representing buds at all stages of winter physiological status were selected to capture the potential maximum variation observed in grape bud DTA output (Howell 2000, Ferguson et al. 2014, Londo and Kovaleski 2017).

Experiment 2 - Evaluation of time delay (shipping) on sample cold hardiness. We performed several time-delay experiments to test the hypothesis that dormant buds must be processed immediately after field collection to avoid changes in cold hardiness estimates. Four reciprocal time-delay experiments were completed in this study; the first pair was conducted by shipping samples between New York and Wisconsin (Experiments 2.1 and 2.2), and the second pair between New York and Washington (Experiments 2.3 and 2.4) (**Table 3**). Sample collection and shipment were conducted in both early winter (Experiments 2.1 and 2.3) and late winter (Experiments 2.2 and 2.4), to examine the potential for changing physiological state on shipping impacts. On any given sample date at each location, enough cane material (3 to 6 buds in length), was collected to fill 3 trays (5 buds per sample well, 9 wells per tray; 45 buds per tray). After collection, 45 buds (1 tray) were immediately processed for DTA analysis as described above with either preparation style #1 or #6. The remaining buds were kept on canes until storage treatments were complete. Treatments consisted of: 1) Storing cane sections with at least 45 buds for 24 h at +4°C (all experiments), +20°C (Experiment 2.2 only), or until notified by the shipment receiving lab; and 2) Shipping cane sections with at least 45 buds using an over-night service, packaged in a styrofoam insulated box with an iButton (iButtonLink, LLC, Whitewater, WI USA) temperature logger, to receiving locations listed in Table 3. In Experiments 2.2 and 2.4, samples originating from New York were shipped using cool packs to maintain shipping temperatures; samples originating from Washington or Wisconsin were not shipped with cool packs. Shipping typically resulted in 24 to 72 h processing delays. Once shipped samples were received at the end location, the starting location was notified, and both the stored samples and the shipped samples were prepared for DTA analysis at their respective physical locations.

Experiment 3 - Evaluation of influence of bud position along a cane on cold hardiness. To

examine the potential impact of bud position along a cane on measured LTEs, a series of experiments were conducted in New York. Grapevine canes were collected at the dates described below, and a single individual bud was placed in its own sample well within the DTA sample trays. Preparing samples in this manner limits the ability to include replicate cane collections, particularly from long canes. However, it also prevents the potential introduction of variation that might occur if multiple freezing units were used to accommodate a larger experimental sample (i.e., a single freezing unit with 4 trays of 9 wells can only hold 36 buds, which would be approximately 2 canes of 18 buds each). As a result, LTE values were evaluated from both replicated and nonreplicated cane collections based on the slopes of linear regressions using bud position as a numerical variable (and therefore, for non-replicated canes, n is the number of bud positions evaluated in a cane – see Statistical Approach section) to determine the overall expected change in LTE as bud position advanced from base (node varied; 1, 2, or 3) to apex (varied length).

Experiment 3.1 examined canes collected from Riesling (18 Oct. 2018; 10 Feb. 2019), Chardonnay (6 Jan. 2020), Merlot (6 Jan. 2020), and Marechal Foch (8 Jan. 2020; 12 Jan. 2020) with the goal of testing if bud position significantly influences cold hardiness as evaluated from the cane base to apex. For Riesling on 18 Oct. 2018, buds from node positions 3 through 20 were sampled on three replicate canes; on 10 Feb. 2019, buds from node positions 2 through 19 were sampled on two replicate canes. For Chardonnay and Merlot on 6 Jan. 2020, buds from node positions 1 through 9 were sampled from two replicate canes. For Marechal Foch, buds from node positions 1 through 40 were sampled from one cane on 8 Jan. 2020, and buds from positions 1 through 35 were collected from one cane on 12 Jan. 2020. The high number of nodes prevented testing of multiple canes of Marechal Foch at a single sample date. Thus, Marechal Foch was evaluated at two separate collection dates.

Experiment 3.2 examined 20 total canes of Merlot covering bud positions 1 through 9 collected at a single time point. Initially four replicate canes were examined on 5 Mar. 2020, and the remaining 16 canes were placed, intact, with cut ends submerged in beakers of water. The beakers were placed in a constant-temperature growth chamber (dark; 20°C) and allowed to deacclimate (i.e., lose cold hardiness) over four subsequent time periods (3, 6, 8, and 10 days). Four replicate canes each were removed and assessed for cold hardiness on 8 Mar., 11 Mar., 13 Mar., and 15 Mar. 2020.

Statistical approach. Regression, ANOVA, and Tukey's post hoc HSD analyses were conducted in R (R Core Team 2021) using the following packages: tidyverse (Wickham et al. 2019), dplyr (Wickham et al. 2021), plotrix (Lemon 2006), lubridate (Grolemund and Wickham 2011), broom (Kuhn and Wickham 2020), and base R to test the impact of the factors of interest in each of the experiments. Figures were produced using the ggplot2 package (Wickham 2009) and PupillometryR (Forbes 2020). For Experiment 1 and 2, when unbalanced treatment designs occurred, effects were combined and tested as a single factor. For all experiments, individual factors and their 2-way and 3-way interactions were analyzed when appropriate. For experiment 1, foil, moisture, bud position, preparation style (pre-combination of the three different factors into a single factor), and variety were examined. In Experiment 2, variety, shipment/storage and preparation style were examined, though style was restricted to #1 and #6 (contrasting foil versus moisture), reflecting the preferred styles for source and destination labs. In experiment 3, bud position along the cane was evaluated as a linear regression of LTE and position number. Outliers (>3 studentized residuals) were removed prior to analysis; no iteration had greater than 5 outlier observations. Contrasts between significant factors and interactions were examined using Tukey HSD tests, cutoff of significance evaluation was $\alpha \leq 0.05$.

As LTE values are estimates of cold hardiness, it is ambiguous to assign the "most correct" cold hardiness value for a given freezing test or determine which preparation method is best. We can only assess the experimental approaches that result in the least variable data. Thus, treatment means, standard

error, and standard deviations were retained for comparisons of treatment effects and determination of the factor combinations that consistently produced the least amount of error for estimating LTE. When presenting LTE “drifts”, or changes as a result of different treatment approaches, a “+” is used to indicate a higher LTE (less cold hardy), and a “-” is used to denote a lower LTE (more cold hardy).

Results

Experiment 1 - Effect of sample preparation techniques. In total, 45 tests of sample preparation effects (iterations) were conducted across three years, performed by three lab groups, and for which sample preparation combinations were tested for a consistent and significant impact on mean LTE values. The number of buds assessed across these iterations ranged between $n = 55$ and $n = 160$, after outlier removal. No iteration resulted in more than 5 outlier observations. Grape varieties examined included Chardonnay (28 iterations), Merlot (9), Riesling (2), Cabernet Franc (1), Pinot noir (1), Pinot gris (1), Sauvignon blanc (1), Lemberger (1), and Marechal Foch (1). Not all sample preparation types were queried in every iteration, but the full design was included in 33 of the 45 iterations. For single factor analysis, wrapping buds in aluminum foil resulted in a statistically significant effect in 11 of the 45 iterations (24%), moisture was significant in 12 of 45 iterations (26%), and bud position was significant in 16 of 43 iterations (36%) (two iterations had unbalanced designs for position and were therefore removed from comparison). Significant interactions between these single factors occurred in 14 of the 45 iterations (31%). When preparation style was assessed as a combination of single factors, significant differences among preparation approaches were detected in 21 of 45 iterations (47%). Despite the observation of statistically significant differences in some iterations, the directionality of the effect was not consistent (i.e., whether the effect resulted in higher or lower observed LTEs) The drift of the mean observed temperature of LTE appeared to be random, in both the warmer (+) and cooler (-) direction (Supplemental Table S1).

As it is not possible to determine which sample preparation approach represents the most accurate mean LTE, we assessed the precision of the various preparation styles through examining the standard error and standard deviation of LTE values produced. Only results for Merlot and Chardonnay are shown in the following figures due to the predominance of these varieties in our study. Data for all varieties is reported in **Supplemental Table S1**. Standard error measures ranged from 0.11 to 1.45°C and standard deviation ranged from 0.48 to 5.06°C (**Figure 2**). Additionally, we compared the relative impact and directionality of preparation styles by using preparation style #1 as the point of comparison. Mean LTE values for each preparation style from each experiment were expressed relative to the mean LTE measured in preparation #1 to determine the direction of LTE “drift” (**Figure 2**). Most observations of the mean for the different preparation styles were within a 1°C shift from preparation style #1 (207 of 251 preparation styles), except for a few experiments where preparation styles #3 through #6 resulted in higher (+) LTE values in Chardonnay, and cooler (-) LTE values for Merlot (**Figure 2, Figure 3**).

Experiment 2 - Effect of time-delay (shipping or storage) on sample cold hardiness. Experiment 2.1 examined buds of Riesling, Chardonnay, Frontenac, and Marquette shipped between New York and Wisconsin in December 2018 for effects of shipping/storage and preparation style. Temperature within the shipment boxes averaged 10°C during shipment and varied from a minimum temperature of 4°C to a maximum of 18°C. In Wisconsin, only style #1 was utilized, while in New York #1 and #6 were tested. For Chardonnay buds, there was no significant effect of preparation style ($p=0.50$). However, buds that were stored at 4°C for 48 h had an LTE drift of +1.5°C ($p<0.001$) from those samples that were field-collected and immediately processed. Yet, buds from those same field collections that were shipped where not significantly different ($p=0.96$) and had an LTE drift of only +0.12°C after 48 h. For Riesling buds, there was no significant effect of preparation style ($p=0.76$) and neither 48 h storage at 4°C or shipping resulted in a significant drift in LTE relative to samples that were immediately processed

($p=0.21$; $p=0.59$ respectively). For Frontenac buds, preparation style was not significant ($p=0.06$), but buds that were shipped and evaluated 24 h after field collection had a mean LTE that drifted $+1.6^{\circ}\text{C}$ relative to samples that were immediately processed ($p<0.001$); 24 h storage resulted in LTE that drifted $+1.5^{\circ}\text{C}$ ($p=0.003$). For Marquette buds, preparation style was significant, with preparation style #6 drifting -1.0°C compared to buds prepared with style #1 ($p=0.043$). Storage of buds for 24 h resulted in a $+1.5^{\circ}\text{C}$ LTE drift ($p=0.004$) relative to buds immediately processed while shipped samples were not significantly different ($p=0.08$).

Experiment 2.2 examined buds of Chardonnay (NY), Cabernet franc (NY), Frontenac (WI), and Marquette (WI) shipped between New York and Wisconsin in March 2019, where storage temperature (20°C or 4°C for 24 h), and shipping with or without cool packs for samples collected in New York were evaluated. Temperatures during shipment in cool pack containers averaged 10.5°C , with minimum temperatures of 7.5°C and maximum temperatures of 16.5°C . Temperatures during shipment of non-cool pack containers averaged 15.5°C , with minimum temperatures of 12°C and max temperatures of 21°C . Sample preparation styles were #1 or #6. For Chardonnay, 2 outlier values were removed from the analysis and no significant effect of sample preparation was observed ($p=0.35$). Significantly higher mean LTE values were observed in shipped materials, whether they were shipped with a cool pack ($+1.5^{\circ}\text{C}$; $p<0.001$) or without a cool pack ($+1.7^{\circ}\text{C}$; $p<0.001$) relative to samples that were immediately processed after field collection. Storage of samples on-site at either 4°C ($p=0.88$) or 20°C ($p=0.71$) did not impact observed LTE. For Cabernet franc, 3 outlier values were removed from analysis and there was no significant effect of sample preparation style ($p=0.28$). Storage at 20°C for 24 h resulted in a significant LTE drift of $+1.4^{\circ}\text{C}$ ($p<0.001$) relative to field samples that were immediately processed, while storage at 4°C for 24 h did not affect LTE ($p=0.99$). Neither shipping samples with cool packs or without cool packs and processing 24 h after field collection resulted in significant drift in LTE ($p=0.33$; $p=0.19$). For

Frontenac and Marquette samples, sample preparation comparisons only occurred in NY. For Frontenac, sample preparation style #6 resulted in a significantly higher mean LTE than style #1, though only in samples shipped without cool packs ($+2.0^{\circ}\text{C}$; $p=0.004$). When comparing sample preparation #1 only (shared between origin and destination), shipping without cool packs and processing 24 h after field collection resulted in significant LTE drift ($+1.3^{\circ}\text{C}$; $p=0.01$) but shipping with cool packs had no effect on LTE ($p=0.71$). For Marquette, when comparing shipping effects and sample preparation #1 only (shared between origin and destination), both shipping with or without cool packs and processing 24 h after field collection resulted in significant LTE drift though in opposite directions relative to field samples (-1.6°C ; $p<0.01$, $+2.3^{\circ}\text{C}$; $p<0.001$, respectively). In New York, sample preparation #6 resulted in significantly warmer LTE values than style #1 for samples shipped on cool packs ($+2.3^{\circ}\text{C}$; $p=0.006$), but not when samples were shipped without cool packs ($p=0.12$).

Experiment 2.3 examined buds of Chardonnay and Concord, shipped between New York and Washington in December. Sample preparation styles #1 and #6 were used in both locations. LTE data for field-collected, and immediately processed, material in New York were not available due to a failed freezer run. As a result, comparisons of New York field-collected versus stored/shipped buds could not be conducted. Samples sent to Washington were shipped with cool packs and temperatures averaged 4.6°C , with minimum temperatures of 1°C and maximum temperatures of 10°C . For Chardonnay, a single observation was removed as an outlier and shipping/storage ($p=0.001$) and its interaction with preparation style ($p=0.04$) were significant. Preparation style alone did not significantly impact mean LTE when compared after 24 h of storage in New York ($p=0.64$), nor after 24 hours of shipping to Washington ($p=0.22$). When examining the significant interaction, shipped samples that were prepared with preparation style #6 had a significant LTE shift of -1.5°C ($p=0.002$) relative to samples stored in New York. Samples prepared with style #1 trended in the same direction but were not significant ($p=0.89$). For

Concord, four observations were removed as outliers. Shipping/storage ($p < 0.001$), preparation style ($p = 0.03$), and the interaction term ($p = 0.03$) were all significant. When examining the interaction, samples stored for 24 h at 4°C, preparation style #6 had a significantly LTE drift (+2.9°C; $p = 0.03$) relative to preparation style #1. For shipped samples, this preparation style difference in LTE drift increased (+3.6°C; $p = 0.002$). For samples shipped to Washington, preparation style was not significant.

For Chardonnay samples collected in Washington, two outlier observations were removed from the analysis. Shipment/storage was significant ($p < 0.001$) as was the interaction with preparation style ($p = 0.009$). When examining this interaction, storage at 4°C for 24 h with either preparation style #1 or #6 did not significantly impact mean LTE ($p = 0.9$, $p = 0.16$, respectively). However, the effect of shipping was significant for both, with warmer LTE values recorded for both preparation style #1 (+1.2°C; $p = 0.05$) and preparation style #6 (+2.6°C; $p < 0.001$). For Concord samples collected in Washington, one outlier observation was removed from the analysis. Single factors for preparation style ($p = 0.005$) and shipment/storage ($p < 0.001$), as well as their interaction were significant ($p = 0.005$). When examining this interaction, storage at 4°C for 24 h significantly differed from samples immediately processed from the field when sample preparation style #6 was used (-0.68°C; $p = 0.047$) but not preparation style #1 ($p = 0.5$). When examining the effect of shipping and processing 24 hrs later, the inverse response occurred, with preparation style #1 significantly different (+0.92°C; $p = 0.009$) while preparation style #6 was not ($p = 0.67$).

Experiment 2.4 examined buds of Chardonnay and Concord, collected and shipped between Washington and New York in February. For samples collected in New York, storage was performed at 4°C for 24 h. When New York samples were shipped to Washington, they were shipped using cool packs. Temperatures within the cool pack shipments averaged 4.7°C with minimum temperature of -0.8°C and maximum temperature of 10°C. Shipping of samples collected in Washington underwent significant delays due to inclement weather across the country; all shipped samples, and their on-site stored

counterparts, were evaluated 5 days after their original field collection. To compensate for the longer storage in the experimental design, on-site samples in Washington were held between 1°C to 2°C rather than 4°C. For New York Chardonnay, one outlier observation was removed, single factors were significant for preparation style ($p=0.004$) and shipping/storage ($p<0.001$) while the interaction was not ($p=0.33$). When examining preparation style and shipping/storage contrasts, only one combination was significant. Comparisons between mean LTE of samples shipped to Washington and processed using preparation style #1 were significantly different and drifted +2.5°C from samples prepped as style #1 and processed immediately after field collection ($p<0.001$); comparisons of style preparation #6 after shipping were not significantly different ($p=0.15$). Storage for 24 hours at 4°C did not significantly affect mean LTE measurements in either preparation style #1 ($p=0.47$) or #6 ($p=0.22$). For New York Concord samples, preparation style and shipping/storage were both significant ($p=0.05$; $p<0.001$), as was the interaction ($p=0.04$). Samples that were stored at 4°C for 24 h and prepared as style #1 or #6 had an LTE drift of +4.6°C ($p<0.001$) and +4.7°C ($p<0.001$) respectively, relative to samples that were immediately processed after field collection. Samples that were shipped on cool packs to Washington and processed 24 h after initial field collection had a significant LTE drift of +3.0°C ($p<0.001$) for preparation style #1, while shipping did not significantly affect mean LTE for preparation style #6 ($p=0.78$), compared with samples that were processed after field collection.

For Chardonnay samples collected in Washington, two observations were removed as outliers. The single factor for preparation style and the interaction term were not significant, but shipping/storage (5 days after collection) resulted in an LTE drift of +3.5°C ($p<0.001$). Those samples that were stored on-site in Washington between 1°C to 2°C for 5 days, did not see a shift in LTE relative to samples that were processed immediately after field collection ($p=0.80$). For Concord samples from Washington, three outlier observations were removed from the analysis. Single factors for preparation style ($p<0.001$) and

shipping/storage ($p<0.001$) were both significant as was the interaction ($p=0.001$) Shipping and processing 5 days later in New York resulted in an LTE drift of $+1.9^{\circ}\text{C}$ ($p=0.001$) for preparation style #6, while shipping and preparation style #1 was not significantly different ($p=0.98$). For samples stored between 1°C to 2°C and processing 5 days later, LTE drift occurred in the opposite direction, with preparation style #1 drifting -1.7°C ($p=0.003$) and preparation style #6 drifting -2.6°C ($p<0.001$), relative to samples that were processed immediately after field collection

Experiment 3- Effect of the impact of bud position along the cane. Twenty-nine different canes were examined with DTA to test the impact of bud position along a cane on measured LTE. Experiment 3.1 consisted of 11 of those DTA runs, and evaluated canes collected from the field and processed for cold hardiness on the same day. For three of these runs, the bud position along the cane had a significant effect on observed LTE as noted by a slope significantly different from zero. For Riesling, two canes evaluated from samples collected on 10 Feb. 2019 demonstrated LTE values changed by $+0.13^{\circ}\text{C}$ and $+0.14^{\circ}\text{C}$ per bud, when going from nodes 2 through 19 ($p=0.004$; $p=0.042$ respectively). A single cane of Chardonnay collected on 6 Jan. 2020 also demonstrated a change in LTE of $+0.38^{\circ}\text{C}$ per bud when going from node 1 through 9 ($p<0.001$). The remaining 8 canes involving Chardonnay, Merlot, Marechal Foch, and Riesling did not demonstrate a slope significantly different from zero (Figure 4; Supplemental Table S2).

Experiment 3.2 examined Merlot buds on nodes 1 through 9 from four replicate canes, initially processed on one date, and then resampled at four additional dates (3, 6, 8, and 10 days) after being stored at 20°C . The mean LTE increased with each successive sample date as buds deacclimated while in storage at 20°C . There was no effect of bud position on observed LTE for any of the canes processed on the field collection date nor after 3 days of deacclimation (Figure 5; Supplemental Table S2). One cane was lost for the batch deacclimated for 6 days and one cane had a significant decreasing slope ($-0.89^{\circ}\text{C}/\text{node}$, $p=0.003$), suggesting greater cold hardiness in more apical nodes. No impact of node position was

observed for canes deacclimated for 8 days. Three of four canes had significant slope deviations in the sample deacclimated for 10 days. Two canes had positive slopes ($0.4^{\circ}\text{C}/\text{node}$, $p=0.04$; $0.54^{\circ}\text{C}/\text{node}$, $p=0.021$), one had a negative slope ($-1.8^{\circ}\text{C}/\text{node}$, $p=0.004$), and the remaining cane was not significantly different from zero. However, when the data from each sample date were combined to examine the LTE change from basal to apical node position, none of the slopes were significantly different from zero (Figure 5; Supplemental Table S2).

Discussion

This paper explored the variability in observed LTE values of grapevine dormant buds as a result of bud preparation for DTA, time-delays prior to DTA evaluation (i.e., shipping or storage), and the node position along the length of a grapevine cane from which a bud was selected when it was collected in the vineyard prior to DTA. The present study demonstrated that while statistical differences can sometimes be observed between pre-freeze treatments when using DTA, the actual measured temperature difference between preparation methods is inconsistent in the direction of differences, and rarely great enough to be biologically relevant. Shipping and storage of samples appears to have had a greater effect on the potential for LTE drift when canes are collected late in the winter season for *V. vinifera* varieties, and had an overall greater impact (regardless of timing) on hybrid varieties. Finally, changes in bud LTE from the basal to apical end of sampled canes were not consistently significantly different; 7 of 29 cane evaluations found a significant slope difference, 5 found that basal buds had significantly lower LTE (more cold hardy) than apical buds (slope was positive and significant), and 2 found that basal buds had significantly higher LTE than apical buds (slope was negative and significant). Overall, the data indicate that the estimation of grapevine LTE values as measured by DTA methods is robust to variation in sample preparation techniques, thus allowing those conducting DTA flexibility in protocol design to address limitations they may face in experimental design (e.g., limited equipment, limited access to grapevine material, significant, significant distances between sampling location and tissue processing).

Evaluation of sample preparation techniques. The unifying message seen in our evaluation of different sample preparation styles is that ultimately, the key to using DTA for evaluating cold hardiness is to be consistent with the chosen sample preparation style throughout any given experiment. Classical studies examining DTA methods in grapevine described efforts to evaluate buds on intact canes (Quamme 1984) as well as the use of moistened tissue to assist with ice nucleation during freeze runs (Wolf and Pool 1987). Since these earlier studies, researchers have continued to refine DTA methods to include the use of foil packets to reduce dehydration and increase thermal conductivity of exotherms (Gale and Moyer 2017). While we observed statistically significant effects when comparing between individual sample preparation choices in nearly half of the 45 total iterations (Supplemental Table S1), the drift in LTE those factors produced was not consistent in direction (+ or –) or magnitude. Use of foil shifted LTE toward colder values nine times, toward warmer values two times, and had no effect 34 times. Use of a wet Kimwipe shifted LTE toward colder values nine times, toward warmer values three times, and had no effect 33 times. Finally, bud orientation differences within the sample wells shifted LTE toward colder values five times, toward warmer values 11 times, and had no effect 27 times. In a few cases there were differences in mean LTE as large as 3.6°C between preparation styles, but this was rare, and inconsistent among varieties, sampling times, or preparation styles. It was far more typical that differences between preparation styles resulted in less than 1°C difference in mean LTE when compared with our defined “standard” preparation style (style #1; Figure 2). Ultimately, this suggests that variations in preparation styles, as it relates to the use of moistened tissue paper, foil packets, or bud orientation, and their combinations, should not impact the quality of observed LTE of dormant grapevine buds, and programs should adopt the preparation style that best suits the needs and time constraints of their experiments. Our results also suggest that conditions during the typical time of sample preparation (less than 45 min), such as the maintenance of room temperature for employee comfort, is highly unlikely to have a significant or meaningful impact on observed LTE.

Evaluation of time-delay (shipping) effect on cold hardiness. Location of vineyards relative to cold hardiness processing sites is often a major limitation on a program's ability to evaluate different varieties or provide a data set for growers in different regions. Programs overcome this by devising elaborate packaging to maintain field temperatures when transporting samples (Kose and Kaya, 2020), and it has severely limited the development of centralized processing facilities due to the fear that time in transport would alter the observed LTE. While we did find instances of delayed processing resulting in LTE drift, these were not consistent, except conditions of storage and shipping that were not cooled tended to result in LTE drift toward less cold hardiness. Overall, storing samples at 4°C or less, or shipping them on cool packs, along with processing samples within 24 h of field collection, resulted in the least amount of LTE drift, when it did occur. Most observed drifts were less than 2°C, except for the event where sample shipments were delayed (5 days) by inclement weather. Differences in shipping temperature were apparent when comparing packages without cool packs, versus those with cool packs. Cooled shipments tended to remain below 10°C while ambient did not. It may be argued that shipping at any temperatures above freezing could promote deacclimation in the buds, thus leading to a significant drift in LTE. However, actual deacclimation as a result of shipping at ambient temperatures is unlikely, as the temperature and duration of that temperature to trigger deacclimation (Kovaleski et al. 2018) exceeds those of the shipping times and temperatures seen here. Fundamentally, assessing storage conditions on the impact of LTE drift is straight-forward, but assessing whether shipping has an effect is less so. An important caveat of the shipping/storing results presented here is that we cannot fully separate the effects of shipping from the effects of the different labs, DTA machines, and data collection personnel, because samples were processed at different locations. The most appropriate contrast would be for each lab to ship themselves a package overnight, a test we did not envision when establishing this study. As with sample processing method, it is likely more important to be consistent in sample storage and timeliness of processing, rather than to strictly adhere to extreme efforts in keeping samples chilled and reducing their

time-to-processing, provided some minimal efforts are made, such as storage at 4°C or less (typical cooler), and processing within 24 h. But the ability to potentially ship samples for DTA processing, and using techniques such as overnight shipping and cool packs, should not be over looked. The ability for research and extension groups to ship samples for cold hardiness evaluation could result in the development of regional lab hubs, where other between-lab sources of variation are reduced. It is our opinion that the benefits associated with shipping samples to regional hubs and broadening cold hardiness monitoring across a wider stakeholder base outweighs the potential for some LTE drift to occur in shipped samples.

Evaluation of the impact of bud position along the cane. Cane ripening and periderm formation are critical to cold hardiness acclimation of grapevine buds (Zabadal et al. 2007). This process occurs acropetally from the base of canes toward the apex. As a result, cold hardiness assessments made in late fall and early winter before this process is complete may find differences associated with their location along the cane. For example, Wolpert and Howell (1984) saw differences in LTE when cold hardiness was assessed in August-October when comparing “basal”, “middle”, and “apical” buds. These position-based differences in cold hardiness disappeared as the winter season progressed, and the buds continued to acclimate. While not specifically isolating individual nodes, Wolpert and Howell (1984) noticed more end-of-winter bud damage at buds near the cane apex than in nodes 1 through 8; their assumption was that the bud damage was related to cold temperature events during the winter. These trends are in agreement with the results presented here. In our study, we saw a similar trend of minor increases in observed LTE from the cane base towards the apex, but within the typical range of node positions that would be retained during pruning, there was very little to no change in observed bud LTE. This was particularly true of buds located in the region of the cane typically retained during spur or cane pruning (nodes 1 through 10). Similarly, Buztepe et al. (2017) compared cold hardiness among grapevine buds in cane positions 1 through 6, and with each experimental run, only one or two buds would differ from the others in LTE, and

the position of those buds that differed varied over the course of the sampling season. Our results were similar, with some buds divergent from the slope of the regression line, but not consistent in the position relative to other nodes. This confirmation of lack of significant differences in bud LTE along the commercially-relevant sections of a grapevine cane, during the times of year when cold hardiness evaluations are most common, should allow those who work with grapevine DTA more flexibility in selecting buds for analysis. This is of particular interest in situations where sample size is limited, such as in the case of germplasm evaluation, or assessments of newly-bred varieties.

Conclusion

The results produced in this study provide a few key take-home messages for researchers concerned about measuring cold hardiness in grapevines: 1) No one preparation style was consistently better than others at estimating cold hardiness, sticking with a preparation style for the duration of a study is better than mixing; 2) If held at low temperatures ($<4^{\circ}\text{C}$), samples can be shipped or stored for 24 hours without appreciably affecting estimates of LTE; and 3) Though it is advised to avoid apex bud tissue and lateral canes, bud position does not have an appreciable effect on LTE when using standard cane collection techniques.

Literature Cited

- Andrews PK, Sandidge CR, and Toyama TK. 1984. Deep supercooling of dormant and deacclimating grape buds. *Amer. J. Enol. Vitic.* 35:175-177.
- Buztepe A, Kose C, and Kaya O. 2017. Evaluation of cold tolerance of dormant buds according to position using thermal analysis in Karaerik (*V. vinifera* K.) grape. *Intl. J. Res. Rev.* 4:38-45.
- Clark HJ. 1936. Injury to the buds of grape varieties caused by low temperatures. *Proc. Amer. Soc. Hort. Sci.* 34:408-413.

- 583 Clore WJ, Wallace MA, and Fay RD. 1974. Bud survival of grape varieties at sub-zero temperatures in
584 Washington. *Amer. J. Enol. Vitic.* 25:24-29.
- 585 Dami IE, Ennahli S, and Zhang Y. 2012. Assessment of winter injury in grape cultivars and pruning
586 strategies following a freezing stress event. *Amer. J. Enol. Vitic.* 63:106-111.
- 587 Dami IE, Li S, and Zhang Y. 2016. Evaluation of primary bud freezing tolerance of twenty-three
588 winegrape cultivars new to the eastern United States. *Am. J. Enol. Vitic.* 67:139-145.
- 589 Davenport JR, Keller M, and Mills LJ. 2008. How cold can you go? Frost and winter protection for grape.
590 *HortScience* 43:1966-1969.
- 591 Einhorn TC, Turner J, Gibeaut D, and Postman JD. 2011. Characterization of cold hardiness in quince:
592 Potential pear rootstock candidates for Northern pear production regions. *Acta Hort.* 909:137-143.
- 593 Esau K. 1948. Phloem structure in the grapevine and its seasonal changes. *Hilgardia* 18:217-296.
- 594 Fennell A. 2004. Freezing tolerance and injury in grapevines. *J. Crop Improv.* 10:201-235.
- 595 Ferguson JC, Moyer MM, Mills LJ, Hoogenboom G, and Keller M. 2014. Modeling dormant bud cold
596 hardiness and budbreak in twenty-three *Vitis* genotypes reveals variation by region of origin. *Am. J.*
597 *Enol. Vitic.* 65:59-71.
- 598 Forbes S. 2020. PupillometryR: An R package for preparing and analysing pupillometry data. *J. Open*
599 *Source Softw* 5: 2285.
- 600 Gale, E.J. and M.M. Moyer. 2017. Cold Hardiness of *Vitis vinifera* Roots
601 <http://www.ajevonline.org/content/68/4/468>
602 <http://www.ajevonline.org/content/68/4/468>
603 American Journal of Enology and Viticulture 68: 468-477.
- 604 Graham PR, and Mullin R. 1976. The determination of lethal freezing temperatures in buds and stems of
605 deciduous azalea by a freezing curve method. *J. Amer. Soc. Hort. Sci.* 101:3-7.
- 605 Grolemond G, and Wickham H. 2011. Dates and times made easy with lubridate. *J. Stat. Softw.* 40: 1–25.

- 606 Howell GS, and Shaulis N. 1980. Factors influencing within-vine variation in the cold resistance of cane
607 and primary bud tissue. Am. J. Enol. Vitic. 31:158-161.
- 608 Howell GS. 2000. Grapevine cold hardiness: Mechanisms of cold acclimation, mid-winter hardiness
609 maintenance, and spring deacclimation. Proc. of the ASEV 50th Anniversary Meeting. Seattle,
610 Washington. June 19-23.
- 611 Kaya O, and Kose C. 2020. How pretest temperatures change the cold hardiness of grapevine (*Vitis*
612 *vinifera* L. cv Karaerick) dormant buds? Int. J. Fruit Sci. 20:S1470-1482.
- 613 Kose C, and Kaya O. 2022. Differential thermal analysis reveals the sensitivity of sweet cherry flower
614 organs to low temperatures. Int. J. Biometeor. 66:987–994.
- 615 Kovács LG, Du G, and Ding P. 2002. Tissue moisture loss during sample preparation lowers exotherm
616 temperatures in dormant grape buds. HortScience 37:701-704.
- 617 Kovaleski AP, Reisch BI, and Londo JP. 2018. Deacclimation kinetics as a quantitative phenotype for
618 delineating the dormancy transition and thermal efficiency for budbreak in *Vitis* species. AOB Plants.
619 10:ply066; doi: 10.1093/aobpla/ply006
- 620 Kovaleski AP. 2022. Woody species do not differ in dormancy progression: Differences in time to
621 budbreak due to forcing and cold hardiness. Proc. Natl. Acad. Sci. U.S.A. 119:e2112250119
- 622 Kuhn M, and Wickham H. 2020. Tidymodels: A collection of packages for modeling and machine
623 learning using tidyverse principles. [Online]: <https://www.tidymodels.org>.
- 624 Lemon J. 2006. Plotrix: a package in the red light district of R. R-News 6(4): 8-12.
- 625 Liu J, Lindstrom OM, and Chavez DJ. 2019. Differential thermal analysis of ‘Elberta’ and ‘Flavorich’
626 peach flower buds to predict cold hardiness in Georgia. HortSci. 54:676–683.
- 627 Londo J, and Kovaleski AP. 2017. Characterization of wild North American grapevine cold hardiness
628 using differential thermal analysis. Am. J. Enol. Vitic. 68:203-212.
- 629 Londo J, and Martinson T. 2015. Geographic trend of bud hardiness response in *Vitis riparia*. Acta Hort.

- 630 1081:299-304.
- 631 Mills LJ, Ferguson JC, and Keller M. 2006. Cold-hardiness evaluation of grapevine buds and cane
- 632 tissues. *Am. J. Enol. Vitic.* 57:194-200.
- 633 Moyer MM, Mills LJ, Hoheisel GA, and Keller M. 2011. Assessing and managing cold damage in
- 634 Washington vineyards. Extension Manual EM042e. Washington State University. Revised in 2019.
- 635 Neuner G, Monitzer K, Kaplenig D, and Ingruber J. 2019. Frost survival mechanism of vegetative buds in
- 636 temperate trees: Deep supercooling and extraorgan freezing vs. ice tolerance. *Front. Plant Sci.* 10:537.
- 637 North M, Workmaster BA, and Atucha A. 2021. Cold hardiness of cold climate interspecific hybrid
- 638 grapevines grown in a cold climate region. *Am. J. Enol. Vitic.* 72:318-327.
- 639 Pellett H. 1971. Comparison of cold hardiness levels of root and stem tissue. *Can. J. Plant Sci.* 51:193-
- 640 195.
- 641 Pratt C, and Pool RM. 1981. Anatomy of recovery of canes of *Vitis vinifera* L. from simulated freezing
- 642 injury. *Am. J. Enol. Vitic.* 32:223-227.
- 643 Quamme HA. 1986. Use of thermal analysis to measure freezing resistance of grape buds. *Can. J. Plant*
- 644 *Sci.* 66:945-952.
- 645 R Core Team. 2021. R: A language and environment for statistical computing. R Foundation for
- 646 Statistical Computing, Vienna, Austria. <https://www.R-project.org/>.
- 647 Shellie K, Cragin J, and Serpe M. 2014. Performance of alternative European wine grape cultivars in
- 648 southwestern Idaho: Cold hardiness, berry maturity, and yield. *HortTech* 24:138-147.
- 649 Stergios BG, and Howell GS. 1977. Effect of site on cold acclimation and deacclimation of Concord
- 650 grapevines. *Am. J. Enol. Vitic.* 28:43-48.
- 651 Wample RL, Reisenaur G, and Bary A. 1990. Microcomputer-controlled freezing, data acquisition and
- 652 analysis system for cold hardiness evaluation. *HortSci.* 25:973-976.

- 653 Wample RL, Spayd SE, Evans RG, and Stevens RG. 1993. Nitrogen fertilization of White Riesling
654 grapes in Washington: Nitrogen seasonal effects on bud cold hardiness and carbohydrate reserves.
655 Am. J. Enol. Vitic. 44:159-167.
- 656 Wang Z, Chai F, Zhu Z, Elias GK, Zin H, Liang Z, and Li S. 2020. The inheritance of cold tolerance in
657 seven interspecific grape populations. Scientia Hort.266, doi.org/10.1016/j.scienta.2020.109260.
- 658 Warmund MR, and George MF. 1990. Freezing survival and supercooling in primary and secondary buds
659 of *Rubus* spp. Can. J. Plant Sci. 70:893–904.
- 660 Wickham H. 2009. Ggplot2: Elegant graphics for data analysis. 2nd Ed. Springer, New York.
661 <https://doi.org/10.1007/978-0-387-98141-3>
- 662 Wickham H, Averick M, Bryan J, Chang W, D’Agostino L, McGowan, François R, Golemund G, Hayes
663 A, Henry L, Hester J, Kuhn M, Lin Pedersen T, Miller E, Milton Bache S, Müller K, Ooms J,
664 Robinson D, Paige Seidel D, Spinu V, Takahashi K, Vaughan D, Wilke C, Woo K, and Yutani H.
665 2019. Welcome to the tidyverse. J. of Open Source Software 4(43):1686.
- 666 Wickham H, François R, Henry L, and Müller K. 2021. Dplyr: A grammar of data manipulation. R
667 package version 1.0.7. <https://CRAN.R-project.org/package=dplyr>
- 668 Wolpert JA, and Howell GS. 1984. Effects of cane length and dormant season pruning date on cold
669 hardiness and water content of Concord bud and cane tissues. Am. J. Enol. Vitic. 35: 237-241.
- 670 Wolf TK, and Cook MK. 1994. Cold Hardiness of dormant buds of grape cultivars: Comparison of
671 thermal analysis and field survival. HortScience 29:1453-1455.
- 672 Wolf TK, and Pool RM. 1987. Factors affecting exotherm detection in the differential thermal analysis of
673 grapevine dormant buds. J. Amer. Soc. Hort. Sci. 112:520-525.
- 674 Wolfe W. 2001. Vine and vineyard management following low temperature injury, p. 101-110. In. Rantz,
675 J.M. (ed.). Proc. ASEV 50th Anniversary Annual Meeting. Amer. Soc. Enol. Vitic. Davis, CA.

-
- 676 Wolpert JA, and Howell GS. 1984. Effects of cane length and dormant season pruning date on cold
 677 hardiness and water content of Concord bud and cane tissues. *Am. J. Enol. Vitic.* 35: 237-241.
- 678 Yilmaz T, Alahakoon D, and Fennell A. 2021. Freezing tolerance and chilling fulfillment differences in
 679 cold climate grape cultivars. *Horticulturae* 7(1), 4:<https://doi.org/10.3390/horticulturae7010004>
- 680 Zabadal TJ, Dami IE, Goffinet MC, Martinson TE, and Chien ML. 2007 Winter injury to grapevines and
 681 methods of protection. Extension Bulletin E2930. Michigan State University.
- 682 Zhang Y, and Dami I. 2012. Foliar application of abscisic acid increases freezing tolerance of field-grown
 683 *Vitis vinifera* Cabernet franc grapevines. *Am. J. Enol. Vitic.* 63:377-384.
- 684

685

Table 1 Grapevine bud preparation practices evaluated in this study. Practices were: 1) Enclosing the bud in an aluminum foil packet (Foil Packet); 2) Including a moistened tissue paper with the bud (Moist Preparation); and 3) Changing the orientation of the bud relative to the thermoelectric module (TEM) plate (Bud Orientation; down is touching the TEM plate). All permutations of the three practices were evaluated, for a total of 8 different bud preparation styles.

	Foil Packet	Moist Preparation	Bud Orientation (Bud)
Preparation style 1	Yes	No	Down
Preparation style 2	Yes	No	Up
Preparation style 3	Yes	Yes	Down
Preparation style 4	Yes	Yes	Up
Preparation style 5	No	Yes	Down
Preparation style 6	No	Yes	Up
Preparation style 7	No	No	Down
Preparation style 8	No	No	Up

686

Table 2 Bud preparation methods were evaluated on multiple *Vitis* varieties over 3 different winter seasons.

Location	Variety	Dates of Runs
Prosser, WA	<i>V. vinifera</i> ‘Chardonnay’	2018-2019 – 3 and 21 Dec. 2018; 11 Jan., 1 Feb., 5 and 22 Mar. 2019 2019-2020 – 8 Nov. and 6 Dec. 2019; 11 Jan., 1 Feb. and 6 Mar. 2020 2020-2021 – 3 Nov. and 11 Dec. 2020; 15 Jan. 2021
Prosser, WA	<i>V. vinifera</i> ‘Merlot’	2018-2019 – 8 Jan. 2019 2019-2020 – 4 Dec. 2019; 16 Jan. and 18 Feb. 2020
Geneva, NY	<i>V. vinifera</i> ‘Riesling’	2018-2019 – 19 Nov. and 5 Dec. 2018 2019-2020 – 12 Feb. 2020
Geneva, NY	<i>V. vinifera</i> ‘Merlot’	2018-2019 – 5 Dec. 2018 2019-2020 – 6 and 9 Jan., 12 Feb. 2020 2020-2021 – 22 Dec. 2020
Geneva, NY	<i>V. vinifera</i> ‘Chardonnay’	2018-2019 – 5 Dec. 2018 2019-2020 – 6 Jan. 2020 2020-2021 – 22 and 30 Dec. 2020
Geneva, NY	<i>V. vinifera</i> ‘Lemberger	2019-2020 – 9 Jan. and 12 Feb. 2020
Geneva, NY	<i>V. hybrid</i> ‘Marechal Foch’	2019-2020 – 12 Feb. 2020 2020-2021 – 6 Jan. 2021
Geneva, NY	<i>V. vinifera</i> ‘Pinot noir’	2019-2020 – 12 Feb. 2020
Geneva, NY	<i>V. vinifera</i> ‘Cabernet franc’	2020-2021 – 22 Dec. 2020
Geneva, NY	<i>V. vinifera</i> ‘Cabernet Sauvignon’	2019-2020 – 12 Feb. 2020
Geneva, NY	<i>V. vinifera</i> ‘Pinot gris’	2020-2021 – 6 Jan. 2021
Geneva, NY	<i>V. vinifera</i> ‘Sauvignon blanc’	2019-2020 – 12 Feb. 2020
Geneva, NY	<i>V. hybrid</i> ‘Marquette’	2020-2021 – 30 Dec. 2020

687
688

689

Table 3 The impacts of delayed processing times, shipping, and on-site storage on observed low-temperature exotherms of grapevine buds was assessed by reciprocal processing of samples.

Start Location	Ship Location	Varieties	Experiment	Field Sampling and Immediate Processing Date	Shipping and Storage Processing Date
Geneva, NY	Madison, WI	<i>V. vinifera</i> ‘Riesling’, ‘Chardonnay’, and ‘Cabernet franc’	2.1	19 Dec. 2018	21 Dec. 2018
			2.2	26 Mar. 2019	27 Mar. 2019
Madison, WI	Geneva, NY	<i>Vitis</i> hybrids ‘Frontenac’, and ‘Marquette’	2.1	19 Dec. 2018	20 Dec. 2018
			2.2	26 Mar. 2019	27 Mar. 2019
Geneva, NY	Prosser, WA	<i>V. vinifera</i> ‘Chardonnay’; and	2.3	16 Dec. 2019	17 Dec. 2019
			2.4	19 Feb. 2020	24 Feb. 2020
Prosser, WA	Geneva, NY	<i>V. labruscana</i> ‘Concord’	2.3	16 Dec. 2019	17 Dec. 2019
			2.4	19 Feb. 2020	24 Feb. 2020

690

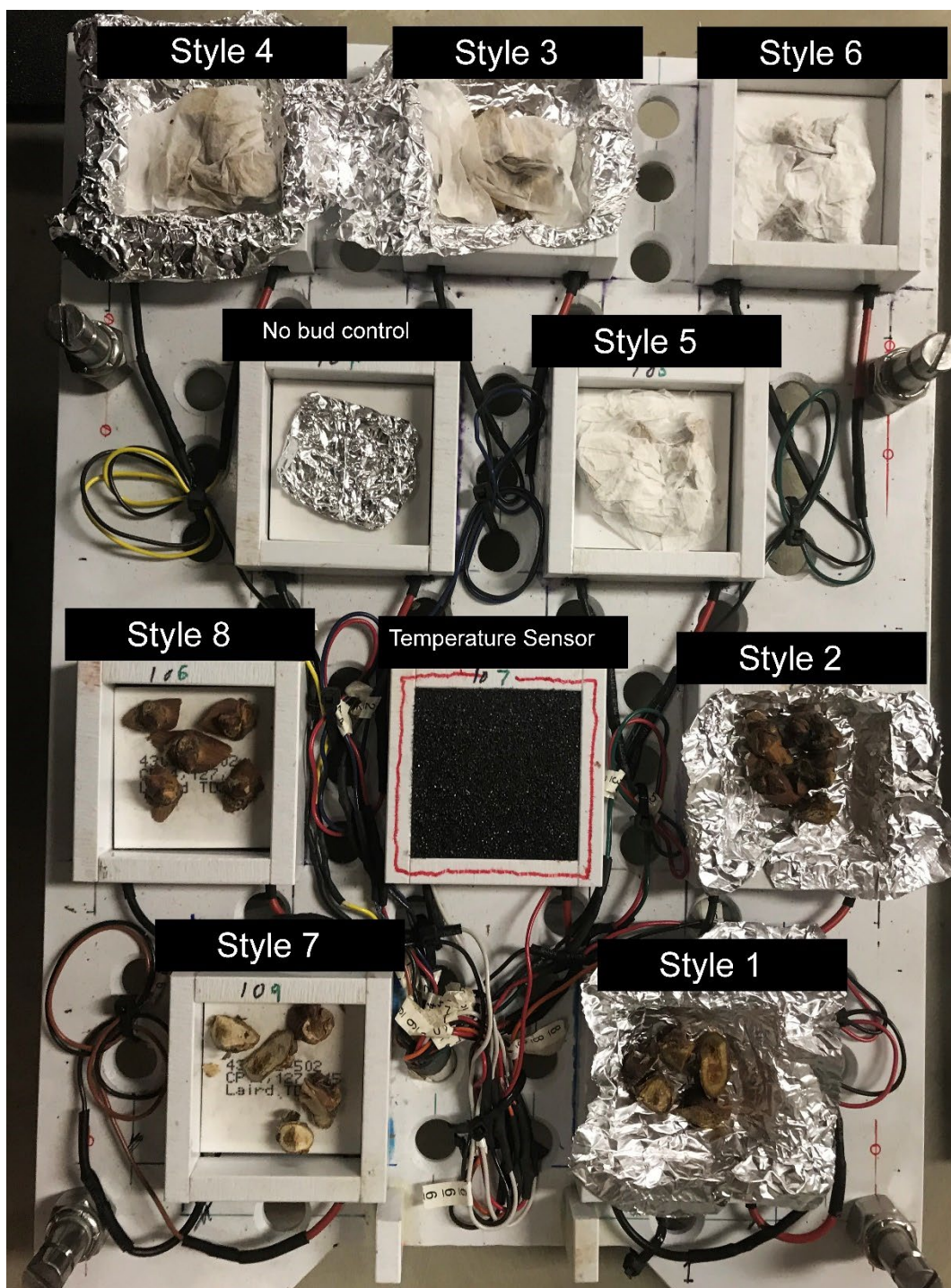


Figure 1 An example layout of an experimental replicate, featuring all 8 bud preparation styles as described in Table 1. Preparation styles included the use of foil packets, moistened kimwipes, and the position of the bud relative to the TEM plate, and all combinations thereof.

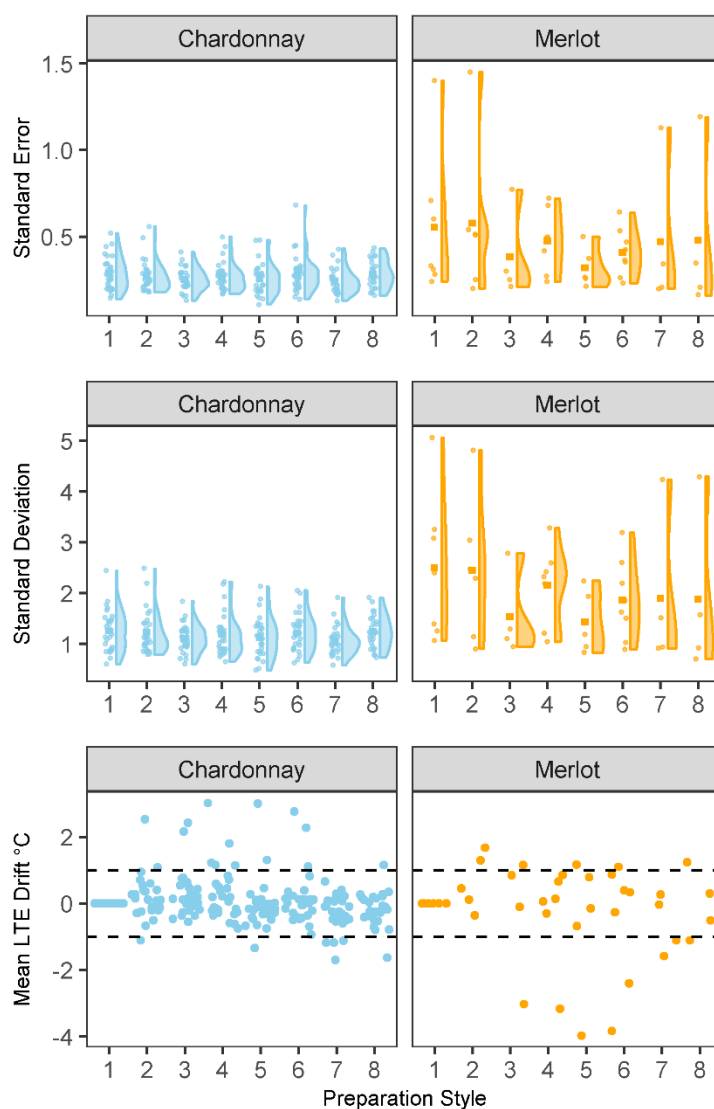


Figure 2 Error distribution and low temperature exotherm (LTE) drift of the 8 preparation styles. Each point represents the mean LTE from one iteration of Experiment 1. A) Distribution of standard error, and B) standard deviation of recorded LTE for *Vitis vinifera* Chardonnay (Left; n=28 iterations) and Merlot (Right; n=9 iterations). C) LTE drift of preparation styles relative to mean LTE measured in preparation style 1. Dashed lines indicate +1 and -1 °C.

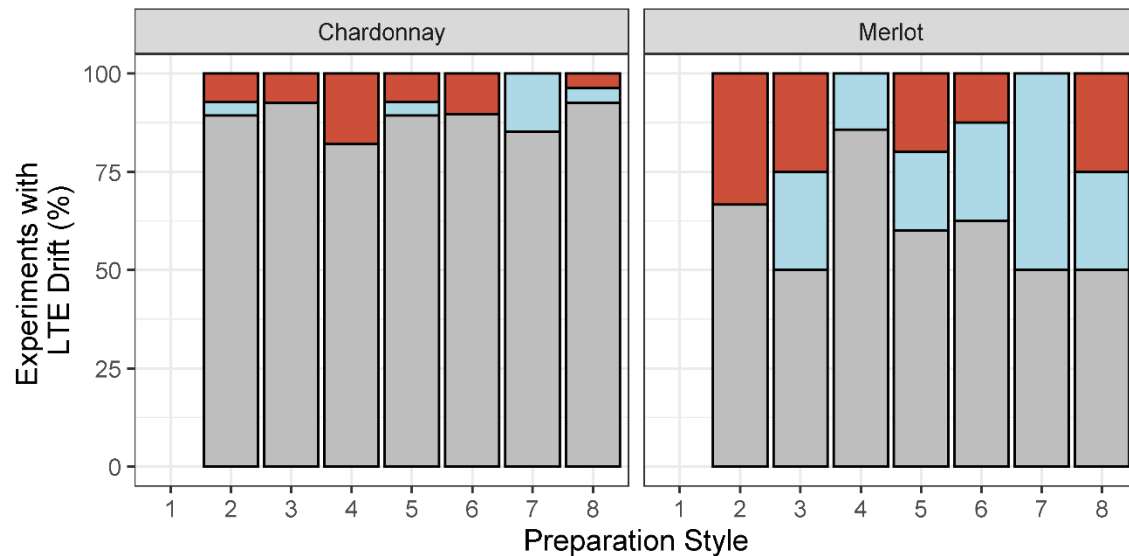


Figure 3 Percent of experiments where LTE drift exceeded 1°C for Chardonnay (left, n=28 iterations) and Merlot (right, n=9 iterations), based on preparation style (Figure 1, Table 1). Red indicates LTE drift was toward warmer temperatures, blue indicates drift toward cooler temperatures. Gray indicates LTE drift was within 1°C of preparation style 1 mean LTE in either direction.

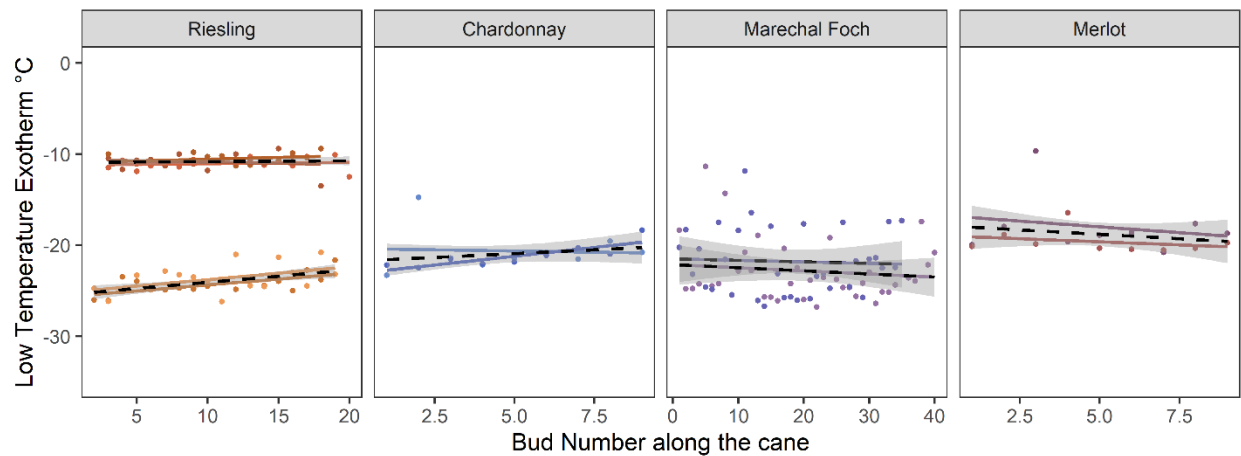


Figure 4 Change in observed low temperature exotherms (LTE) based on bud position along a cane for Riesling, Chardonnay, Marechal Foch and Merlot from Experiment 3.1. Points indicate recorded LTE peaks, lines indicate slope of the linear regression of node number and LTE. Black dotted line indicates the average of the canes collected on the same day, with shaded areas to indicate standard error.

721

Supplemental Table S1 Impacts of sample preparation approaches on observed low temperature exotherms (LTE) of grapevine (*Vitis* sp.) buds using differential thermal analysis (DTA). Sample preparation was analyzed for individual and interactive effects (Individual Factor Effects; Interactions). Preparation, as a combined approach, was also evaluated (Full Preparation Combinations). The default comparison treatment for single factors are Foil (vs. No), Wet (vs. Dry), and Bud Orientation TEM (vs. Away). Values reported are observed drift in LTE in degrees Celsius (positive indicates higher LTE, negative indicates lower LTE). When indicated under the interaction effect, F=foil, M=moisture, and O=bud orientation. Location 1 = New York, Location 2 = Washington #1, Location 3 = Washington #2. "*", "**", and "***" indicates a significant effect at $\alpha \leq 0.05$, ≤ 0.01 , and ≤ 0.001 , respectively. "n" indicates the number of buds/peaks included after outlier removal.

Lab	Cultivar	Date	Foil	Moisture	Orientation	Interaction	Preparation	n
1	Riesling	11/19/2018	-0.5		-0.7	F,O	***	448
3	Chardonnay	12/3/2018			0.6	F,O	***	156
1	Riesling	12/5/2018				ns	ns	94
1	Chardonnay	12/5/2018				ns	ns	152
1	Merlot	12/5/2018		2.9		ns	*	99
2	Chardonnay	12/7/2018				ns	ns	154
2	Chardonnay	12/21/2018		0.9		F,M	***	160
3	Chardonnay	12/21/2018			0.3	ns	ns	160
3	Merlot	1/8/2019				ns	ns	159
2	Chardonnay	1/11/2019	0.7	-0.7		*	***	159
3	Chardonnay	1/11/2019				ns	ns	160
2	Chardonnay	2/1/2019				ns	ns	154
3	Chardonnay	2/1/2019				ns	ns	157
2	Chardonnay	3/5/2019	-0.8		0.7	ns	***	158
3	Chardonnay	3/5/2019			-0.8	M,O	***	160
2	Chardonnay	3/22/2019	-0.8		1	F,O	**	158
3	Chardonnay	3/22/2019	-0.5		-0.4	M,O	**	158
2	Chardonnay	11/8/2019	-0.6			ns	ns	157
3	Chardonnay	11/8/2019				ns	ns	159
3	Merlot	12/4/2019			1.3	M,O	*	159
2	Chardonnay	12/6/2019		-0.8		F,M	ns	158
3	Chardonnay	12/6/2019				ns	ns	157
1	Chardonnay	1/6/2020				ns	ns	80
1	Merlot	1/6/2020	2			na	*	61
1	Lemberger	1/9/2020		2		na	**	68
1	Merlot	1/9/2020				ns	ns	68
3	Chardonnay	1/11/2020		-0.7		ns	ns	108
3	Merlot	1/16/2020				ns	ns	158
2	Chardonnay	1/20/2020				ns	ns	157
3	Chardonnay	2/1/2020				ns	ns	158
3	Chardonnay	2/7/2020			0.3	ns	*	158
3	Merlot	2/18/2020	-0.6	-1	-0.6	F,M	***	157
2	Chardonnay	3/6/2020	-1	-1.6		M,O	***	158
3	Chardonnay	3/6/2020		-1.4	-0.7	F,M; M,O	***	119
3	Chardonnay	11/3/2020	-1	-2	0.8	ns	***	158
3	Chardonnay	12/11/2020				F,M,O	ns	159
1	Cab. Franc	12/22/2020			1	ns	*	112
1	Chardonnay	12/22/2020			1.4	ns	ns	128
1	Merlot	12/22/2020	-0.6			ns	*	119
1	Sauvignon blanc	12/22/2020			1.2	ns	ns	120
1	Marechal Foch	1/6/2021		-3.6	-	ns	***	61
1	Pinot gris	1/6/2021		-2.6	-	F,M	***	66
3	Chardonnay	1/15/2021			0.9	M,O	ns	160
1	Merlot	2/12/2021				ns	ns	92
1	Pinot noir	2/12/2021				ns	ns	55

722

American Journal of Enology and Viticulture (AJEV). doi: 10.5344/ajev.2022.22010

AJEV Papers in Press are peer-reviewed, accepted articles that have not yet been published in a print issue of the journal or edited or formatted, but may be cited by DOI. The final version may contain substantive or nonsubstantive changes.
